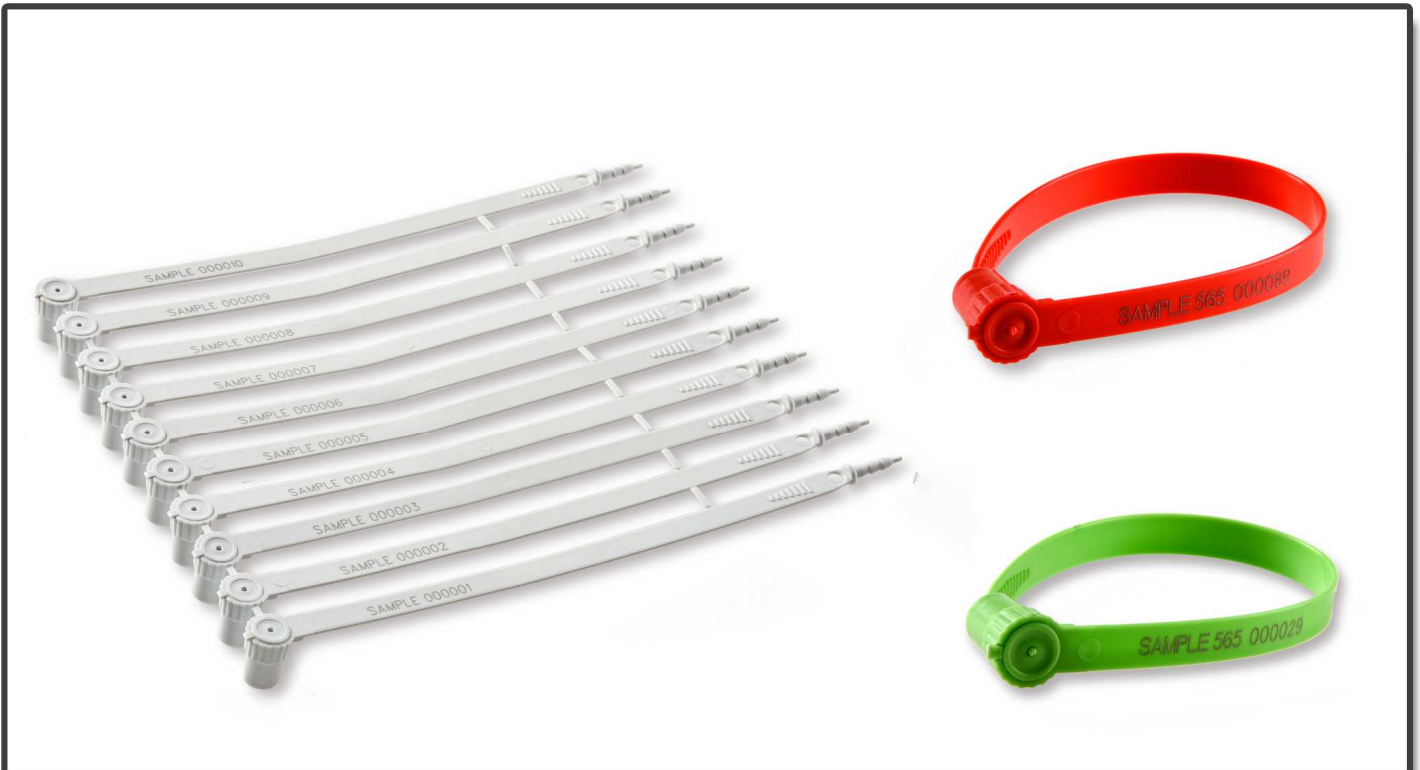


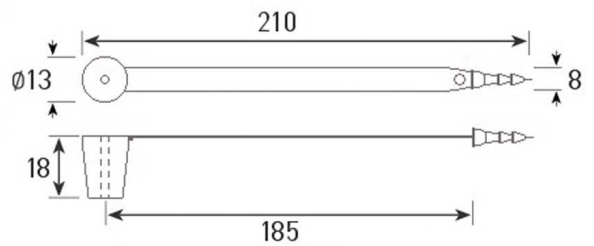
GP565 FIX LENGTH SEAL



Applications



Color Options



All Dimensions in mm

DETAILS

- Made of Polypropylene (PP) body and Polyacetal (POM) inner lock
- Double locking mechanism for enhanced security
- Security breaking hole at the snapping point provide easy removal of the seal
- Company logo and 8 digits consecutive numbering on the flag
- Laser printing option
- Barcode option for mobile applications (Code128, Interleave2/5, etc.)
- Shipped in mats of 10 pieces
- Pull-apart strength : 16 Kgf
- Working temperature : -40C / +80C

PACKAGING DETAILS

Quantity: 1.000 pcs

Box dimensions: 24x25x43 cm

Box weight: 3,30 kg

Pallet info: 100x120x230cm , 100.000 pcs

